



Multi-screen operation with the *ELSA SYNERGY II*

Your *ELSA SYNERGY II* is capable of multi-screen operation. Multi-screen workstations are used for applications requiring the monitoring and control of complex information, in power stations, banks or stock exchanges, for example, or for CAD-related applications. Several *ELSA SYNERGY II* graphics boards may be installed in a single computer, each controlling a monitor of its own. The number of graphics boards that can be deployed is limited only by the number of free slots available.

Prerequisites

- The mainboard of your computer must have a sufficient number of free slots. It is possible to use both PCI and AGP slots.
- You must use the same graphics boards, although it is not necessary to use identical *ELSA SYNERGY II* models. Graphics boards with different amounts of memory may be used together. Bear in mind the resolution and color depth you wish to use, as this depends directly on the capabilities of the graphics board with the smallest amount of memory.
- The standard VGA driver must be installed (→Quick Start).

Once you have installed the ELSA graphics driver, all *ELSA SYNERGY II* will automatically be recognized under Windows.

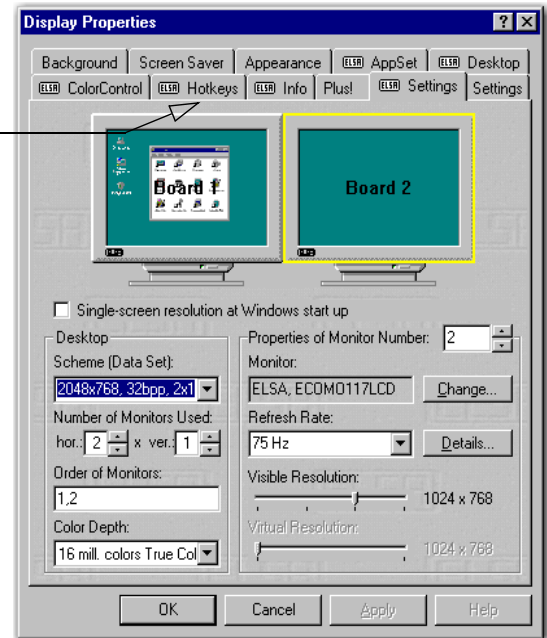
What's necessary?

Under **Start ► Control Panel ► Display**, open the 'Display Properties'. This window also contains the tabs for the multi-screen configuration.

ELSA Settings

Click on the tab labeled ' **ELSA** Settings'. The resolutions and color depths of the individual monitors can be set here.

The ELSA drivers are installed and the connected monitors—two under Windows NT 4.0 in this case—are shown symbolically in the settings



*Under Windows 98 you can reach the ' **ELSA** Settings' by selecting the 'Settings' tab and then clicking on **Advanced....***

Expanding your horizon: The ELSA Desktop

A multi-screen solution should not only expand your desktop onto the available monitors, but should also offer flexible configuration. The ELSA Desktop will help you in this respect, distinguishing mainly between the properties

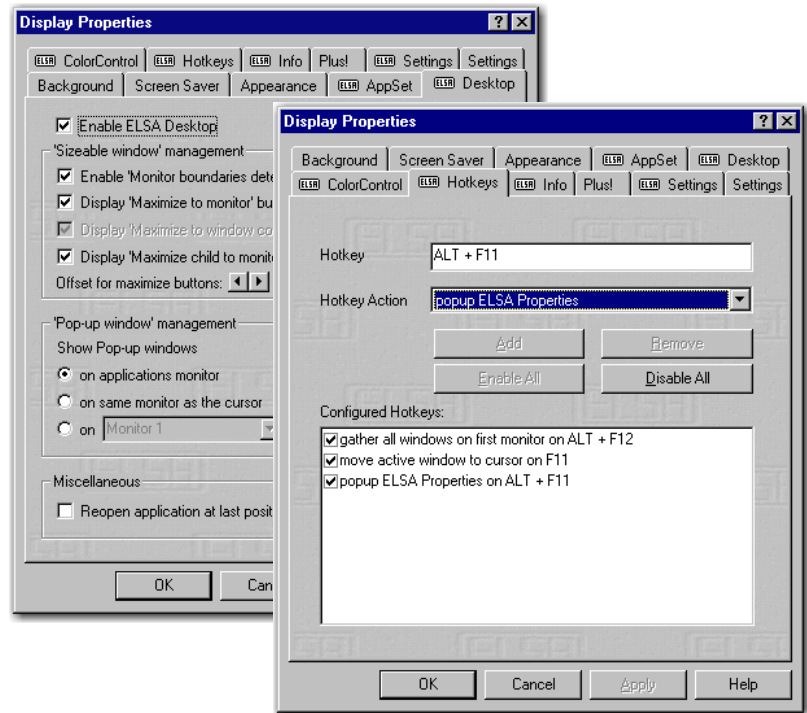
- of the application windows and
- the Windows system messages (pop-up windows).

After enabling the desktop, the group fields on this tab contain the multi-screen configuration options.

ELSA Hotkeys

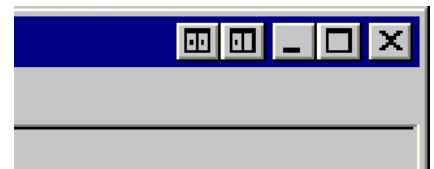
The ELSA Hotkey Manager can be used to assign keyboard shortcuts in a simple and elegant manner. You can launch frequently-used programs with freely definable key combinations, for example.

Dialog boxes and options for the ELSA Desktop and Hotkeys



Important functions may be accessed directly via additional buttons integrated in the window control area.

The settings can be established and saved individually so that the user's usual desktop can be opened on each workstation in a network environment.



*Do you have any questions regarding the various settings? Simply click on the **Help** button or press F1 to open the online help.*